

# HILTI

**Hilti MSP-AL**  
pitched roof  
photovoltaic panel  
mounting system



**The single-run system for quick installation.**

**Hilti. Outperform. Outlast.**

## Applications

- Mounting photovoltaic panels on pitched roofs

## Advantages

- Easy installation: The basic system for the panel support structure uses only five different components
- Very user friendly: Thanks to use of preassembled connecting parts, no additional bolts or nuts are required
- Cost efficient: Cleverly designed system components and preassembled connectors raise installation productivity
- Quality: Components feature matched structural design characteristics for long-term reliability
- High corrosion resistance through use of high-grade materials such as aluminium and stainless steel

## Highlights

- Designed for use with the most popular types of panel
- PROFIS Solar – the PC application for easy selection of the most cost-efficient solution for the job

## We catch the sun on your roof.

With the simple solution for mounting photovoltaic panels on pitched roofs.

The Hilti MSP photovoltaic panel mounting system uses only five matched components to install photovoltaic panel support structures quickly, reliably and with maximum productivity. Preassembled parts makes the process quick and efficient. Thanks to these high-grade components with matching structural design, top quality and long-term reliability are guaranteed.



Cost efficient and reliable thanks to use of optimized roof hooks to suit various load requirements.



Preassembled wing clamps on the roof hooks allow quick, reliable installation of the channels from above – for maximum efficiency.



Precisely fitting connectors for optimum load transfer.

# Hilti MSP-AL pitched roof photovoltaic panel mounting system

## Faster with PROFIS Solar

The PC application that helps you select the most cost-efficient solution.

- Takes wind and snow load zones (postal code) into account
- Based on graphical modules
- Structural design calculations with report
- Parts lists

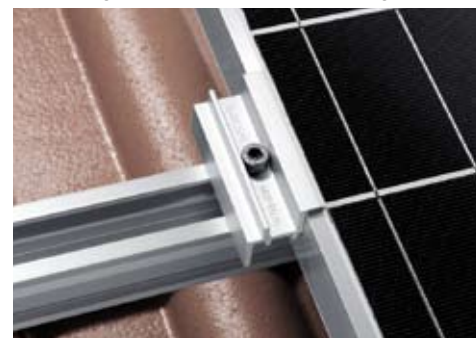
## Channel installation

Channels can be clipped into the pre-assembled roof hook wing clamps and the bolts then tightened from above.



## Mounting the panels

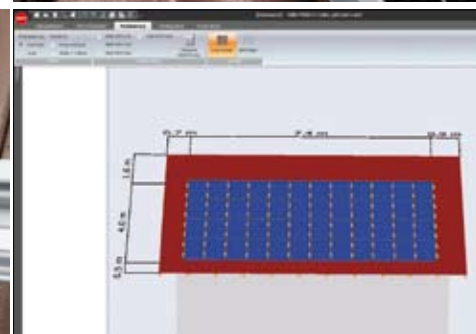
Panel clamps are inserted from above, rotated through 90° and the bolts then tightened.



Can be used as fixed or floating bearers.



When fitting panels, the built-in spring holds the panel clamp at the required pre-set panel thickness.



Fast, easy and reliable: PROFIS Solar – the PC application for the design of support structures and production of parts lists.

### Roof hooks, plates, clamps and accessories

| Ordering designation           | pieces |   | Item no. |
|--------------------------------|--------|---|----------|
| MSP-RHC 45/5 roof hook         | 10     | ① | 435495   |
| MSP-RHC 45/6 roof hook         | 10     |   | 435497   |
| MSP-RHC 41/8 roof hook         | 10     |   | 435499   |
| MSP-RHC 55/8 roof hook         | 10     |   | 435500   |
| MSP-RHC-A 45/8 roof hook       | 10     |   | 435501   |
| MSP-RHC-AA 35 – 45/8 roof hook | 10     |   | 435502   |
| MSP-RHC-CC 44/8 roof hook      | 10     |   | 435503   |
| MSP-RHC-B 30/5 roof hook       | 10     |   | 435504   |
| MSP-RHC-S 50/5 roof hook       | 10     |   | 435505   |
| MSP-HBP-10 A2 plate            | 10     | ② | 435508   |
| MSP-HBP-12 A2 plate            | 10     |   | 435509   |
| MSP-MC 34-37 middle clamp      | 10     | ③ | 382931   |
| MSP-MC 38-42 middle clamp      | 10     |   | 382932   |
| MSP-MC 43-47 middle clamp      | 10     |   | 382933   |
| MSP-MC 48-50 middle clamp      | 10     |   | 382934   |
| MSP-EC 34 end clamp            | 10     | ④ | 382935   |
| MSP-EC 35 end clamp            | 10     |   | 382936   |
| MSP-EC 36 end clamp            | 10     |   | 382937   |
| MSP-EC 38 end clamp            | 10     |   | 382938   |
| MSP-EC 40 end clamp            | 10     |   | 382939   |
| MSP-EC 42 end clamp            | 10     |   | 382940   |
| MSP-EC 46 end clamp            | 10     |   | 382942   |
| MSP-EC 48 end clamp            | 10     |   | 382943   |
| MSP-HB 10x200 A2 hanger bolt   | 20     | ⑤ | 424749   |
| MSP-HB 12x300 A2 hanger bolt   | 20     |   | 424751   |
| MSP-MTP-H45 6m support profile | 1      | ⑥ | 424770   |
| MSP-MTP-H52 6m support profile | 1      |   | 424771   |
| MSP-MTP-SL45 joint connector   | 20     |   | 424774   |
| MSP-MTP-SL52 joint connector   | 18     |   | 424775   |
| MSP-HS 8x100 A2 wood screw     | 100    |   | 424777   |
| MSP-HS 8x120 A2 wood screw     | 100    |   | 424778   |



### Productivity plus



High-performance cordless and corded screwdrivers with perfectly-matched accessories



Cordless saws for cutting a wide range of materials in various corners of the jobsite



Powerful cordless rotary hammers for drilling on roofs without restrictions



Laser range meters for easy, accurate distance measurement

## Hilti. Outperform. Outlast.

Hilti Corporation | 9494 Schaan | Liechtenstein | P +423-234 2111 | F +423-234 2965 | [www.hilti.com/solar](http://www.hilti.com/solar)